

# MONTHLY MEMBERSHIP PROGRESS REPORT

LOCATION INDIA

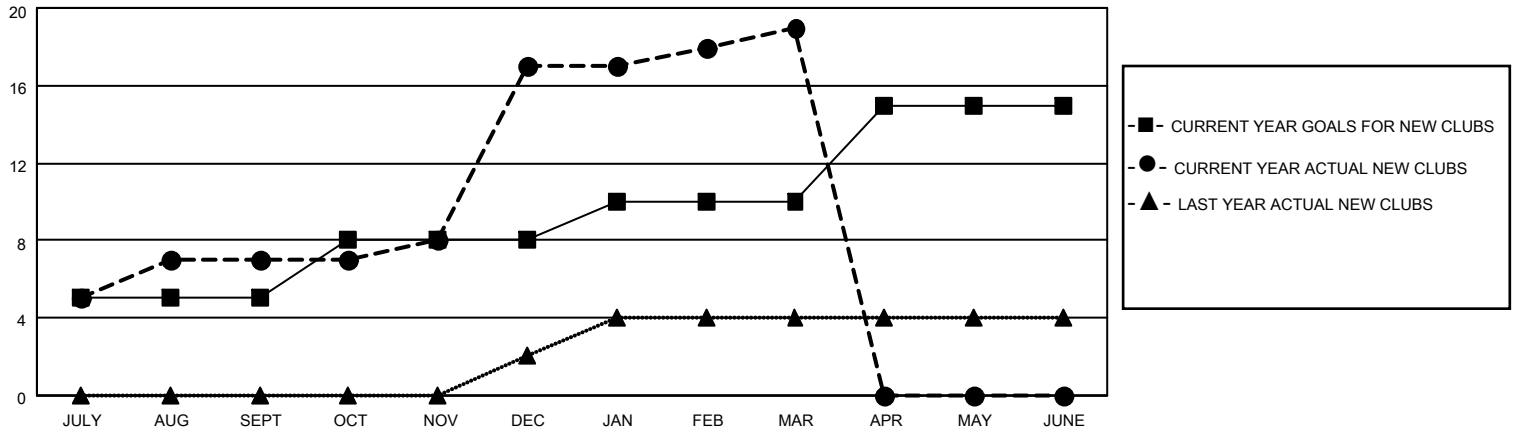
District 318 D

Results as of: 3/31/2021

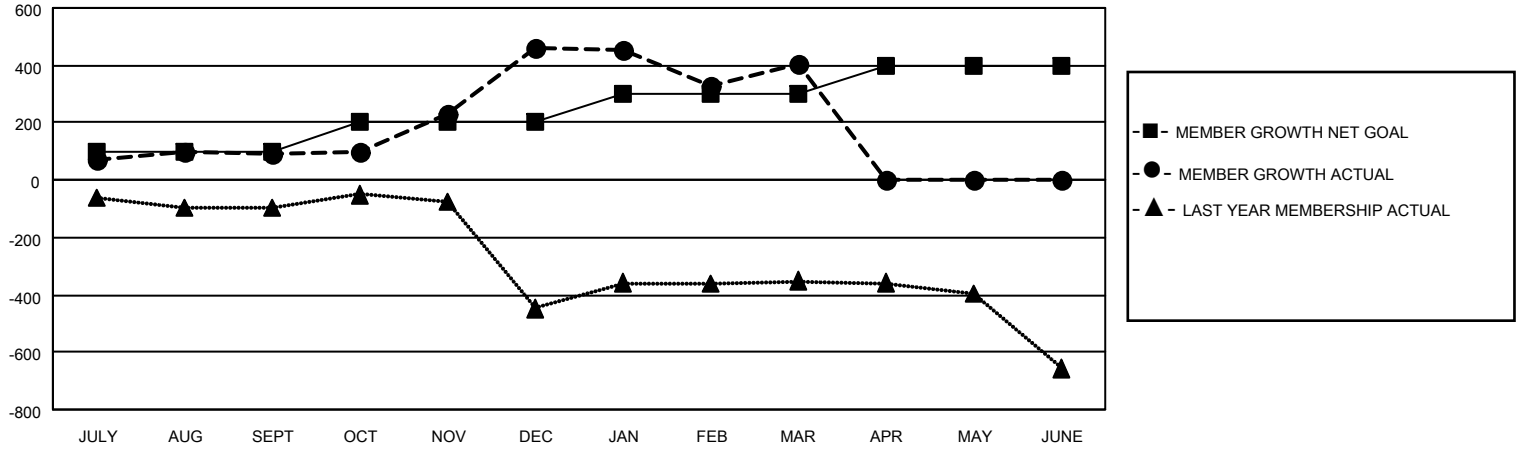
Clubs			
RESULTS FOR 2020-2021			
QUARTER	NEW CLUB GOAL	NEW CLUBS	DROPPED CLUBS
JULY/AUG/SEPT	5	7	0
OCT/NOV/DEC	3	10	0
JAN/FEB/MAR	2	2	7
APR/MAY/JUNE	5	0	0

Members			
RESULTS FOR 2020-2021			
QUARTER	MEMBER GROWTH NET GOAL	MEMBER GROWTH ACTUAL	DROPPED MEMBERS ACTUAL (including transfers)
JULY/AUG/SEPT	100	284	180
OCT/NOV/DEC	100	531	150
JAN/FEB/MAR	100	137	174
APR/MAY/JUNE	100	0	0

**GOALS AND ACTUAL NEW CLUBS CUMULATIVE**



**GOALS AND ACTUAL MEMBERS CUMULATIVE**



**DROPPED CLUBS: 7**

112 CLUBS OF 175 ADDED 1 OR MORE NEW MEMBERS

**GENDER DISTRIBUTION**

MALE 4,858 (83.27%)  
FEMALE 976 (16.73%)

**DROPPED MEMBERS**

DECEASED	18
CLUB CANCELLED	132
OTHER	354
<b>TOTAL</b>	<b>504</b>

[CLICK HERE FOR CUMULATIVE MEMBERSHIP DATA](#)

TOTAL FAMILY UNIT MEMBERS	1,732
FAMILY MEMBERS PAYING HALF DUES	925